

OCEANFRONT CONFERENCE CENTER

FLOOR PLANS & WORKBOOK

GRAND MEETINGS AND EVENTS

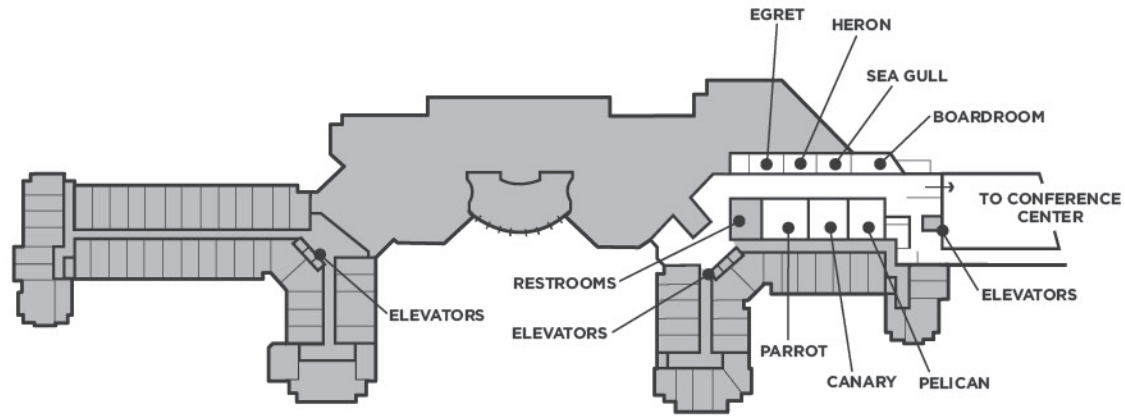
Wyndham Grand Rio Mar Beach Resort & Spa, welcomes groups to a destination designed to ensure the perfect event. A spectacular layout combines world-class recreation and exceptional meeting facilities. Guest rooms, leisure areas and meeting rooms are all in convenient proximity to each other, but uniquely private.

MEETING FACILITIES

- 48,000 total square feet of meeting space
- 24 separate meeting rooms with capacity up to 2,300
- Rio Mar Ballroom - 20,913 square feet of unobstructed space
- Spacious pre-function areas
- Numerous breathtaking outdoor venue options
- Drive-in access to ballroom
- Direct access to banquet kitchen
- Abundant power outlets in floors, walls and ceilings; strategic ceiling hang points
- Comprehensive A/V equipment and service on-site
- Wireless high-speed internet access throughout Conference Center
- CMP certified conference services and catering staff

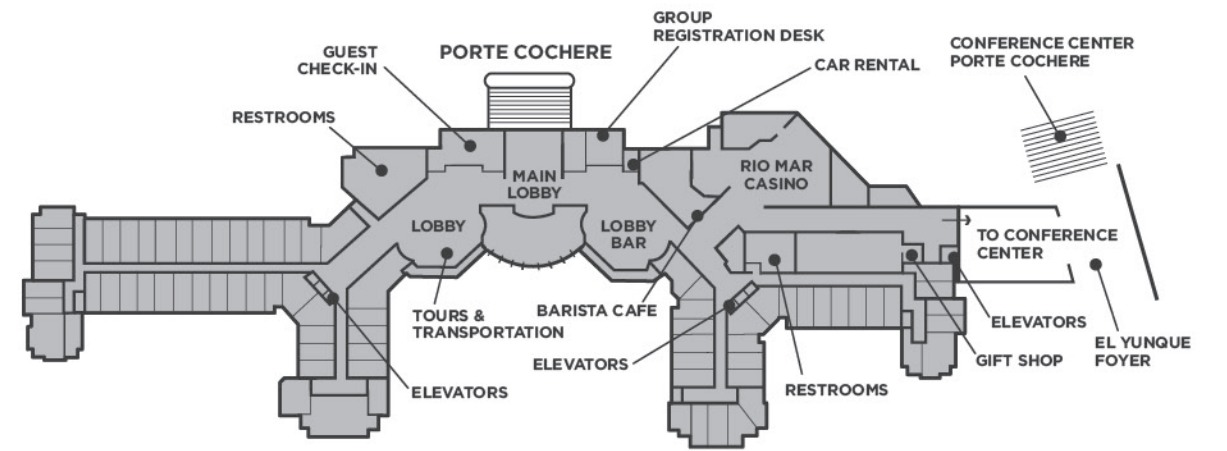
WYNDHAM GRAND RIO MAR BEACH RESORT & SPA

LEVEL 2

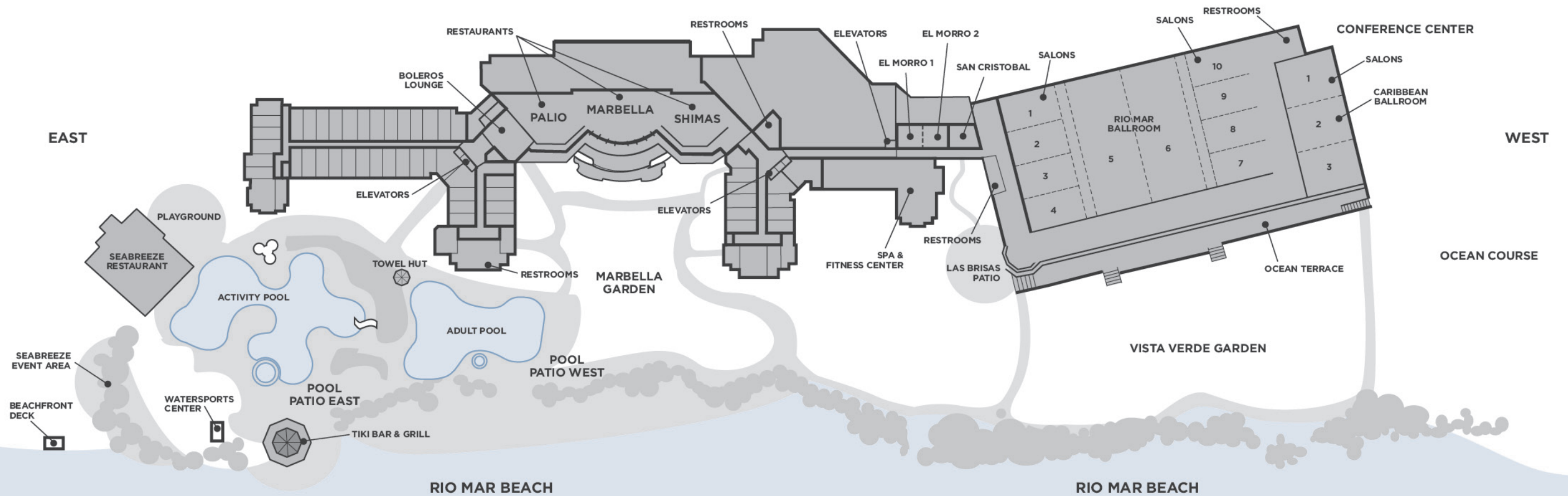


AERIAL VIEW

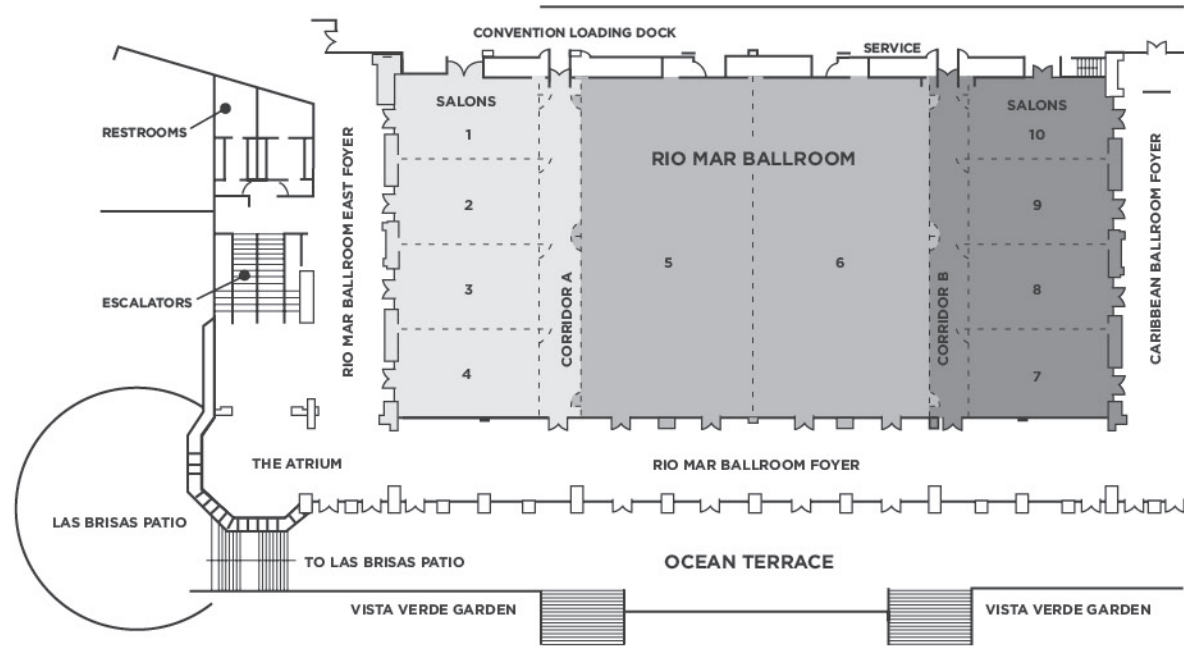
LEVEL 3



LEVEL 1



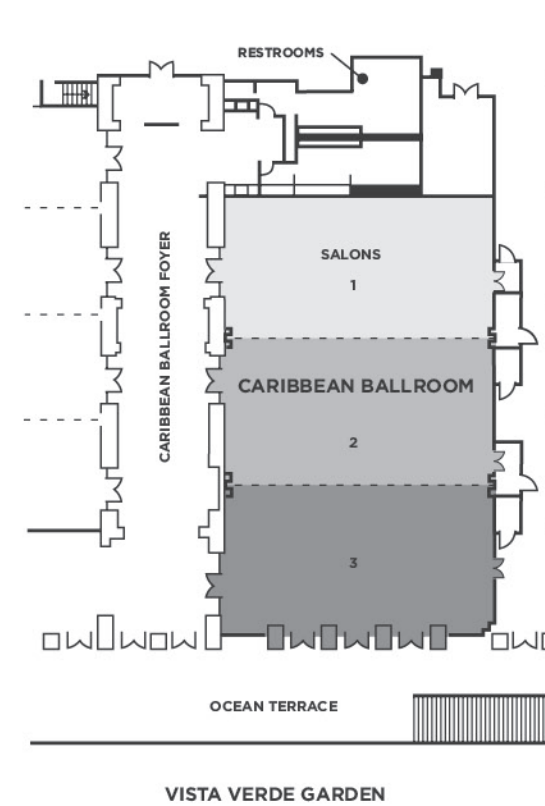
RIO MAR BALLROOM



| EVENT DATE/TIME | ROOM | ACTUAL SQ. FT. | LENGTH | WIDTH | CEILING HT | LOWEST POINT | THEATRE | SCHOOL ROOM | CONFERENCE | U-SHAPE | BANQUET 72" ROUND (SEAT 10) |
|-----------------|----------------------|----------------|---------|---------|------------|--------------|---------|-------------|------------|---------|-----------------------------|
| | Rio Mar Ballroom | 20,913 | 100' 1" | 210' 0" | 21' 11" | 16' 10" | 3,302 | 1,710 | 278 | 181 | 1,760 |
| | Salon 1 | 951 | 40' 9" | 22' 11" | 21' 11" | 16' 10" | 125 | 66 | 50 | 42 | 60 |
| | Salon 2 | 1,062 | 40' 9" | 26' 2" | 21' 11" | 16' 10" | 165 | 72 | 52 | 43 | 70 |
| | Salon 3 | 1,063 | 40' 9" | 26' 2" | 21' 11" | 16' 10" | 165 | 72 | 52 | 43 | 70 |
| | Salon 4 | 922 | 40' 9" | 23' 0" | 21' 11" | 16' 10" | 138 | 72 | 46 | 40 | 60 |
| | Corridor A | 1,139 | 100' 2" | 11' 4" | 21' 11" | 18' 1" | n/a | n/a | n/a | n/a | n/a |
| | Salon 5 | 5,269 | 100' 2" | 52' 10" | 21' 11" | 18' 1" | 677 | 342 | 126 | 108 | 380 |
| | Salon 6 | 5,147 | 100' 3" | 51' 7" | 21' 11" | 18' 1" | 650 | 285 | 124 | 105 | 380 |
| | Corridor B | 1,129 | 100' 2" | 11' 3" | 21' 11" | 18' 1" | n/a | n/a | n/a | n/a | n/a |
| | Salon 7 | 926 | 40' 6" | 23' 3" | 21' 11" | 16' 10" | 138 | 72 | 44 | 38 | 60 |
| | Salon 8 | 1,051 | 40' 7" | 26' 1" | 21' 11" | 16' 10" | 165 | 72 | 50 | 41 | 70 |
| | Salon 9 | 1,050 | 40' 7" | 26' 0" | 21' 11" | 16' 10" | 165 | 72 | 50 | 41 | 70 |
| | Salon 10 | 954 | 40' 9" | 23' 11" | 21' 11" | 16' 10" | 131 | 66 | 48 | 40 | 60 |
| | Salon 1-4 | 4,039 | 100' 1" | 40' 9" | 21' 11" | 16' 10" | 455 | 228 | 112 | 99 | 260 |
| | Salon 7-10 | 4,022 | 100' 3" | 40' 6" | 21' 11" | 16' 10" | 442 | 228 | 112 | 99 | 260 |
| | Salon 5&6 | 10,450 | 100' 2" | 104' 9" | 21' 11" | 18' 1" | 1,560 | 798 | 176 | 131 | 830 |
| | Salon 1-5 + Corr. A | 10,513 | 105' 7" | 100' 1" | 21' 11" | 16' 10" | 1,568 | 819 | 176 | 134 | 850 |
| | Salon 6-10 + Corr. B | 10,366 | 104' 1" | 100' 3" | 21' 11" | 16' 10" | 1,568 | 819 | 174 | 132 | 850 |

Capacities verified by the Professional Convention Management Association. Capacity will vary based on requested room set-up.

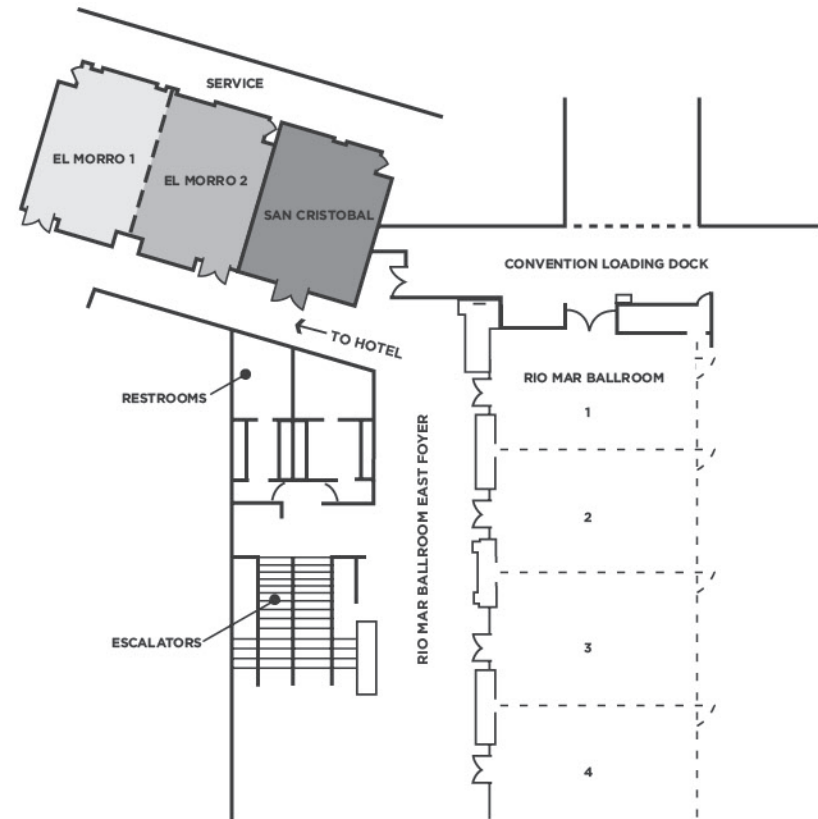
CARIBBEAN BALLROOM



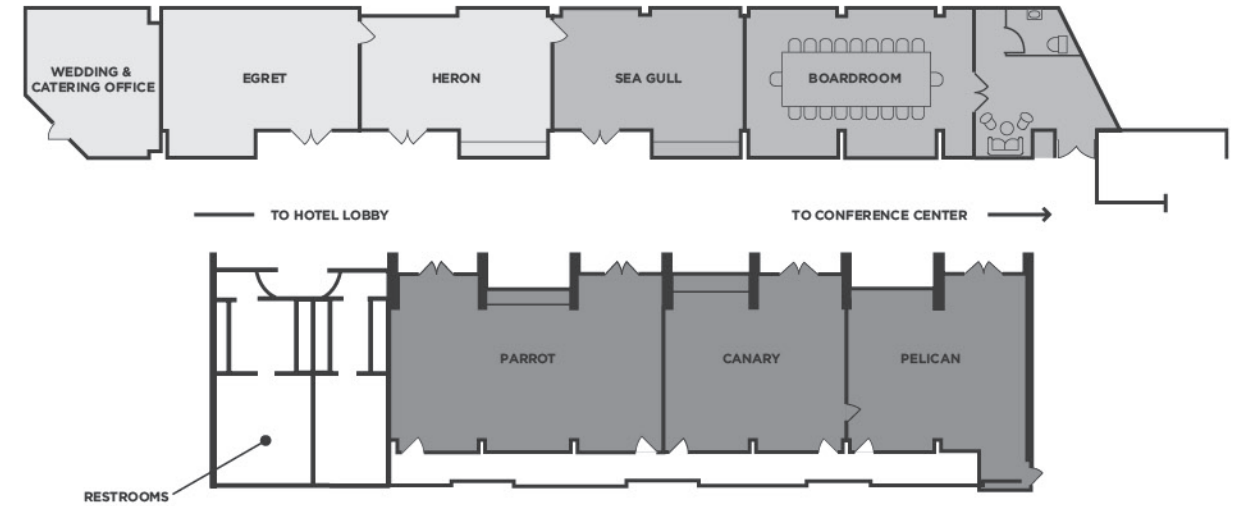
| EVENT DATE/TIME | ROOM | ACTUAL SQ. FT. | LENGTH | WIDTH | CEILING HT | LOWEST POINT | THEATRE | SCHOOL ROOM | CONFERENCE | U-SHAPE | BANQUET 72" ROUND (SEAT 10) |
|-----------------|--------------------|----------------|---------|---------|------------|--------------|---------|-------------|------------|---------|-----------------------------|
| | Caribbean Ballroom | 6,485 | 100' 2" | 63' 11" | 16' 1" | 14' 3.5" | 881 | 441 | 134 | 110 | 480 |
| | Salon 1 | 2,097 | 64' 1" | 31' 10" | 16' 1" | 14' 3.5" | 215 | 99 | 80 | 68 | 140 |
| | Salon 2 | 2,184 | 63' 10" | 34' 4" | 16' 1" | 14' 3.5" | 236 | 99 | 82 | 69 | 140 |
| | Salon 3 | 2,203 | 63' 9" | 34' 1" | 16' 1" | 14' 3.5" | 229 | 99 | 82 | 69 | 140 |
| | Salon 1 & 2 | 4,281 | 66' 9" | 63' 9" | 16' 1" | 14' 3.5" | 522 | 288 | 102 | 78 | 270 |
| | Salon 2 & 3 | 4,387 | 68' 5" | 63' 9" | 16' 1" | 14' 3.5" | 535 | 295 | 104 | 80 | 280 |

Capacities verified by the Professional Convention Management Association. Capacity will vary based on requested room set-up.

FIRST FLOOR MEETING ROOMS



MEZZANINE MEETING ROOMS



| EVENT DATE/TIME | ROOM | ACTUAL SQ. FT. | LENGTH | WIDTH | CEILING HT | LOWEST POINT | THEATRE | SCHOOL ROOM | CONFERENCE | U-SHAPE | BANQUET 72" ROUND (SEAT 10) |
|-----------------|---------------|----------------|--------|---------|------------|--------------|---------|-------------|------------|---------|-----------------------------|
| | El Morro | 1,368 | 49' 6" | 29' 8" | 9' 4.6" | 7' 10.4" | 120 | 60 | 54 | 45 | 80 |
| | El Morro 1 | 670 | 29' 8" | 24' 3" | 9' 4.6" | 7' 10.4" | 100 | 39 | 32 | 26 | 40 |
| | El Morro 2 | 689 | 29' 7" | 24' 11" | 9' 4.6" | 7' 10.4" | 100 | 39 | 32 | 26 | 40 |
| | San Cristobal | 627 | 30' 8" | 21' 2" | 9' 1.6" | 8' 1" | 93 | 45 | 34 | 29 | 40 |

Capacities verified by the Professional Convention Management Association. Capacity will vary based on requested room set-up.

| EVENT DATE/TIME | ROOM | ACTUAL SQ. FT. | LENGTH | WIDTH | CEILING HT | LOWEST POINT | THEATRE | SCHOOL ROOM | CONFERENCE | U-SHAPE | BANQUET 72" ROUND (SEAT 10) |
|-----------------|------------|----------------|---------|--------|------------|--------------|---------|-------------|------------|---------|-----------------------------|
| | Egret | 485 | 26' 10" | 20' 2" | 7' 7.6" | | 55 | 21 | 26 | 22 | 20 |
| | Heron | 489 | 27' 7" | 16' 6" | 8' 9.7" | | 59 | 21 | 26 | 22 | 20 |
| | Sea Gull | 514 | 26' 11" | 17' 7" | 9' 2.6" | 8' 10" | 59 | 21 | 26 | 22 | 20 |
| | Board Room | 668 | 32' 4" | 21' 2" | 9' | 8' 10" | n/a | n/a | 22 | n/a | n/a |
| | Parrot | 1,024 | 41' 5" | 26' 8" | 9' 2" | 8' 11" | 118 | 60 | 46 | 40 | 60 |
| | Canary | 681 | 26' 9" | 26' 8" | 9' 4" | 8' 10.6" | 82 | 39 | 32 | 26 | 30 |
| | Pelican | 680 | 26' 9" | 26' 8" | 9' 2" | 8' 11" | 85 | 36 | 32 | 26 | 30 |

Capacities verified by the Professional Convention Management Association. Capacity will vary based on requested room set-up.

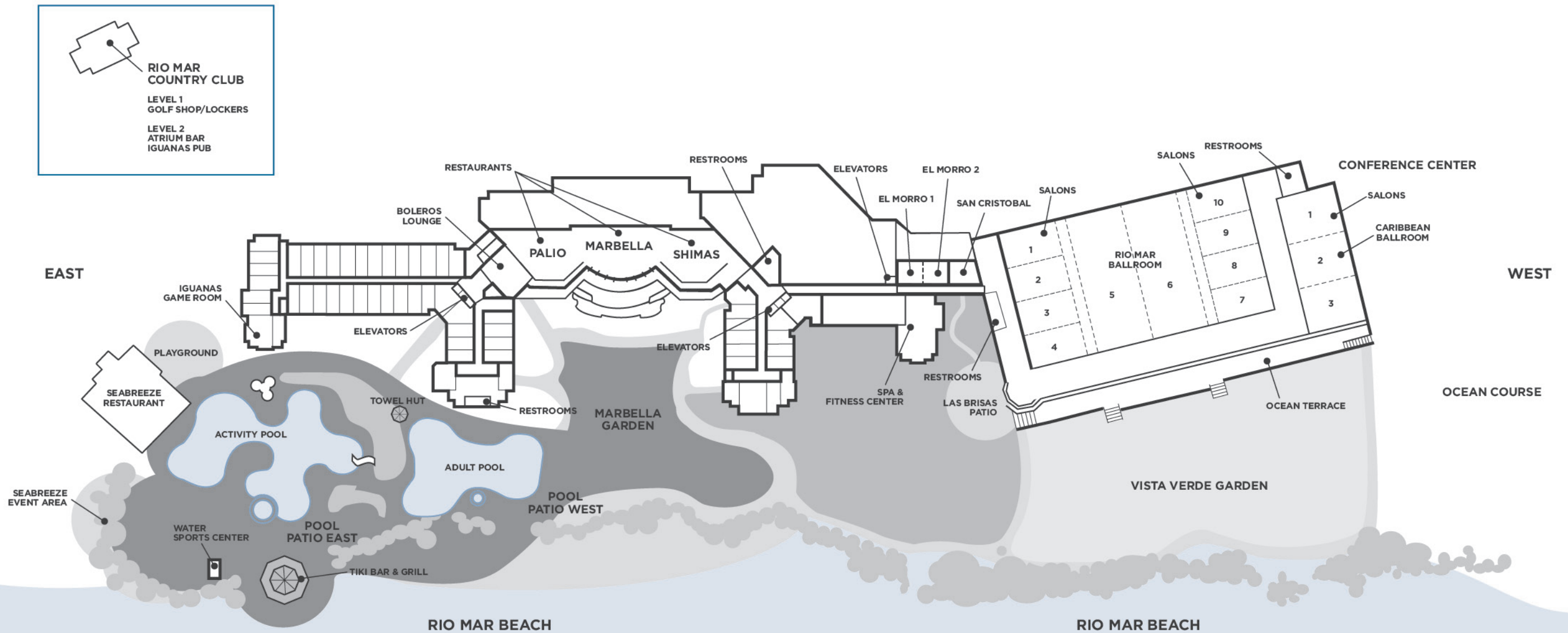
OUTDOOR FUNCTION AREAS

OUTDOOR FUNCTION AREAS

Wyndham Grand Rio Mar Beach Resort & Spa offers acres of lush, open spaces for unique daytime or evening events. Stunning architecture highlights a layout carefully planned for maximum functionality and convenience. Our award-winning Banquet & Catering Team will plan your event. A variety of exciting themes are available for outdoor receptions, cocktail parties and dinners.

| EVENT DATE/TIME | FUNCTION AREA | BANQUET 72" ROUND (SEAT 10) |
|-----------------|--------------------|-----------------------------|
| | Ocean Terrace | 520 |
| | Vista Verde Garden | 1,300 |
| | Las Brisas Patio | 70 |
| | Marbella Garden | 400 |
| | Pool Patio West | 300 |
| | Pool Patio East | 700 |

LEVEL 1



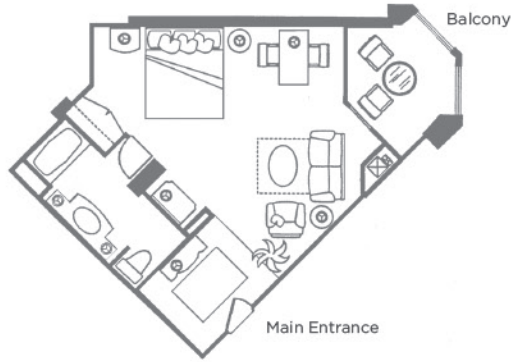
RIO MAR COUNTRY CLUB
 LEVEL 1
 GOLF SHOP/LOCKERS
 LEVEL 2
 ATRIUM BAR
 IGUANAS PUB

SUITES

PUERTO RICO – THE ISLAND OF ENCHANTMENT

JUNIOR SUITE

CARIBBEAN SUITE

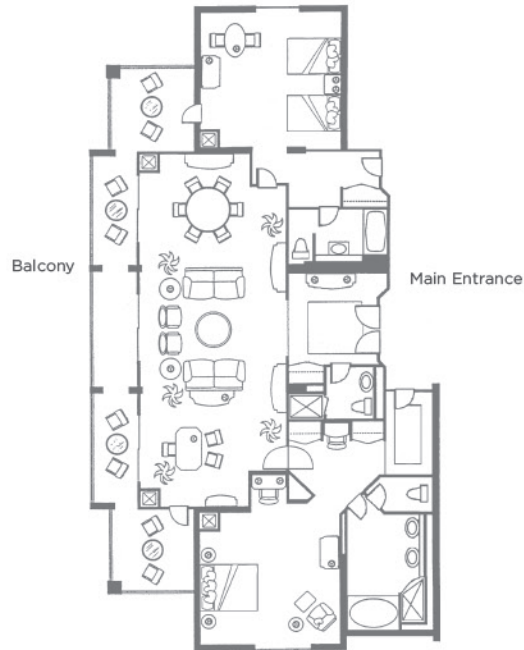


24 Suites • 605 Square Feet

8 Suites • 1,222 Square Feet

ATLANTIC SUITE

GOVERNORS SUITE



6 Suites • 1,701 Square Feet

1 Suite • 2,662 Square Feet

Puerto Rico, a U.S. Commonwealth, provides easy access and modern technology so it's business as usual in paradise.

- No passport, customs or currency exchange required for U.S. citizens.
- Direct-flight access is a breeze from the U.S. and parts of Europe and Latin America.
- 23 major cities in the continental U.S. offer non-stop service to Puerto Rico.
- Flying to Puerto Rico only takes:
 - 3-1/4 hours from Atlanta
 - 3-3/4 hours from New York
 - 4-1/2 hours from Chicago
- The San Juan Seaport is the fourth largest port in the Western Hemisphere.
- High-capacity undersea fiber optic cables and an extensive satellite network link communication from Puerto Rico to the U.S., Europe, South America and the Caribbean.
- Promotional materials shipped to Puerto Rico for meetings, conventions and trade shows are exempt from the local excise tax when planners follow a simple procedure through the Puerto Rico Convention Bureau.
- Wyndham Grand Rio Mar Beach Resort & Spa features its own in-house transportation department. DMCs provide modern transportation alternatives to meeting attendees.
- Spanish and English are both official languages of Puerto Rico.



WYNDHAM GRAND RIO MAR BEACH RESORT & SPA

6000 Rio Mar Boulevard Rio Grande, Puerto Rico 00745-6100
Toll-Free: 800.474.6627 Direct: 787.888.6000 Fax: 787.888.6235
meetings-riomar@wyndham.com

WYNDHAMRIOMAR.COM



Green Hotel Award
2010, 2011, 2012, 2013, 2014

GDS CODE: WY