

The Mining Exchange, A Wyndham Grand Hotel and Spa is nestled in the heart of downtown Colorado Springs, mere steps from numerous shopping, dining, and entertainment venues. We are conveniently located just one hour south of Denver and just 15 minutes from the Colorado Springs Airport. With the Rocky Mountains as its backdrop, Colorado Springs offers an endless supply of spectacular activities and attractions.

About the Hotel

FEATURES

- Historic building built in 1902
- 117 exquisitely appointed guest rooms & suites
- Full-service spa
- 24 hour business center
- Fitness center
- Valet parking
- Nightly turn down service
- Dog friendly
- Miles of hiking, biking, jogging, and walking trails nearby

DINING & ENTERTAINMENT

- Springs Orleans, serving breakfast, lunch, dinner, and Sunday Brunch
- 24-hour Room Service available
- Lobby bar, serving cocktails and light fare
- The Gold Room, an Art Deco entertainment venue next door with a variety of shows every week
- Johnny Martin's, a private car club, open to guests
- Shopping, dining and entertainment within walking distance

MEETING SPACE HIGHLIGHTS

- 17,000+ total sq. ft. of state-of-the-art meeting and event space
- The only downtown function space with hardwood floors, exposed brick walls and windows throughout our event space
- A second floor terrace creates a unique and elegant indoor/outdoor space
- Meetings and event space for anywhere from 8 to 250 people
- Audio visual services available
- European-inspired outdoor courtyard

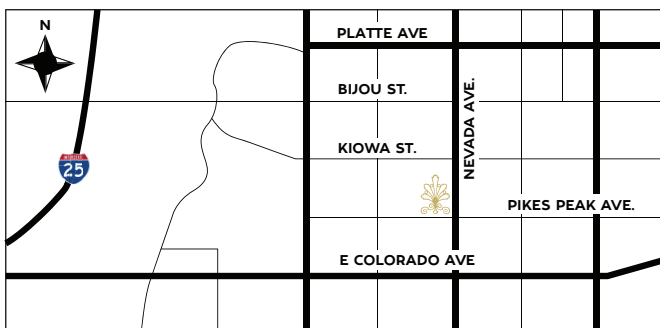
ROOM DETAILS

- Spacious rooms with 12 ft. ceilings
- High-speed Internet access
- Oversized showers with two shower heads
- Extra large granite desk with ergonomic seating
- Daily Wolfgang Puck coffee and tea services
- 42" flat-screen HDTV
- iHome
- In-room safe
- ADA accessible rooms



COLORADO SPRINGS ATTRACTIONS

- US Olympic Training Center
- US Air Force Academy
- The Pikes Peak Center
- Colorado Springs World Arena
- Sky Sox Baseball Stadium
- Switchbacks Soccer
- Pikes Peak
- Pioneers Museum
- Garden of the Gods
- Cave of the Winds
- Olympic Museum (coming soon)
- Hundreds of hiking trails nearby



FROM COLORADO SPRINGS MUNICIPAL AIRPORT (COS)

Distance: 11 miles

From airport, follow signs to I-25 North. Take I-25 N to exit 132 (Bijou St.). Turn right, take Bijou less than 1 mile to Nevada Ave. Turn right onto Nevada Ave. The hotel valet entrance is 3 blocks ahead on Nevada Ave. on the right side.

FROM DENVER

Distance: 68 miles

Take I-25 South to exit 132 (Bijou St.). Turn Left, and take Bijou less than 1 mile to Nevada Ave., turn right onto Nevada Ave. The hotel valet entrance is 3 blocks ahead on Nevada Ave. on the right side.



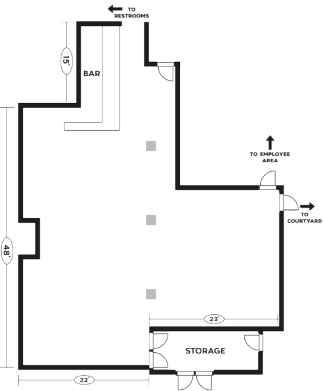
THE
MINING EXCHANGE
A Wyndham Grand Hotel & Spa

Meeting Spaces

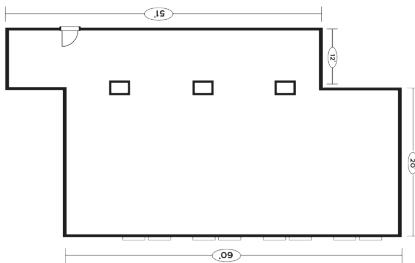
NAME OF ROOM	DIMENSIONS	SQ. FT.	CEILING HEIGHT	THEATRE	CLASSROOM 2 PER	CLASSROOM 3 PER	ROUNDS OF 8	ROUNDS OF 10	HOLLOW SQUARE	U-SHAPE	COCKTAIL	CRESCENT ROUNDS	CONFERENCE
Grand Ballroom	59'x53'	3,127	15'	420	80	125	256	220	80	80	400	200	60
Platinum Ballroom	53'x60'	3,180	9'	350	110	100	200	190	70	80	250	150	40
Platinum Terrace	60'x19'	1,140	-	90	-	-	64	60	-	-	100	-	-
Silver Room	48'x45'	1,907	18'	172	50	66	136	150	52	40	200	100	40
Bronze Room	32'x60'	1,932	9'	100	72	50	64	90	65	50	120	64	70
Executive Board Room	22'x15'	338	12'	20	12	10	16	20	8	6	20	20	12
The Gold Room	93'x34'	4,743	30'	250	48	70	144	140	40	35	175	70	40

*Our meeting room capacities have been calculated using the Meeting Professional International Comfort Calculator

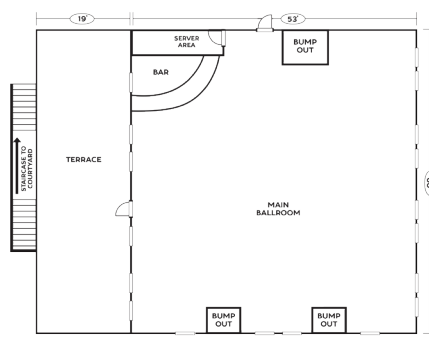
SILVER ROOM



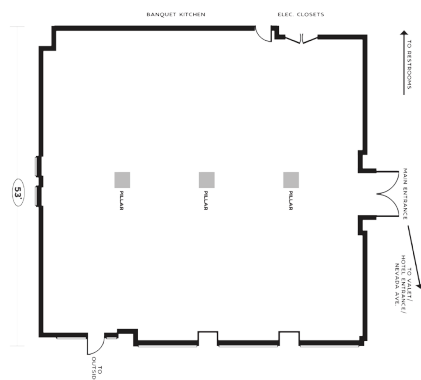
BRONZE ROOM



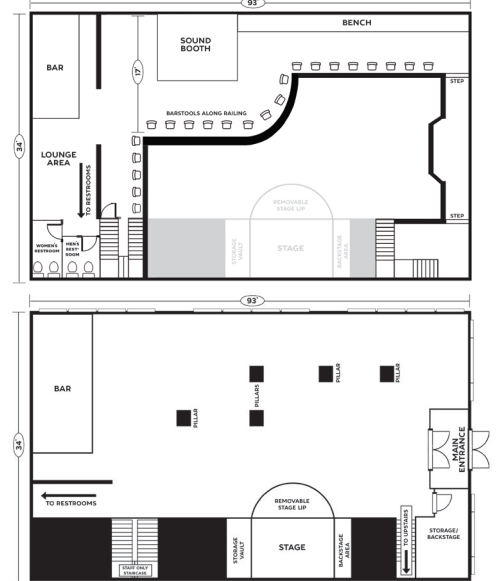
PLATINUM BALLROOM & TERRACE



GRAND BALLROOM



THE GOLD ROOM



EXECUTIVE BOARD ROOM

