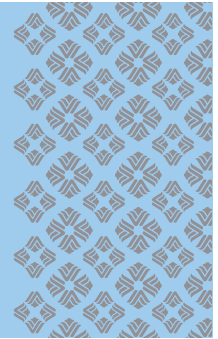




WYNDHAM

Dallas Suites - Park Central



LOCATION

Ideally located in the heart of the North Dallas Park Central Business District and minutes from “Restaurant Row”, the all-suite Wyndham Dallas Suites - Park Central offers an oasis of contemporary comfort, convenience and award-winning hospitality. Business travelers will appreciate the hotel’s close proximity to several corporate headquarters and world-renowned medical facilities, while pleasure-seekers will revel in the array of cultural activities, sporting events, dining and shopping offered in the North Dallas area.

FEATURES

- 295 Luxury Suites
- More than 11,000 Square Feet of Flexible Meeting Space
- Atrium Style- All Suite Property
- Complimentary Wireless High Speed Internet Access in All Public Areas and Guest Rooms
- Café Biarritz- Full Service Restaurant Service Breakfast, Lunch and Dinner
- Lobby Bar- Serving Drinks and Appetizers
- Indoor/Outdoor Pool with Hot Tub and Picnic Area
- 24 Hour Fitness Center and Business Center
- Complimentary Parking
- Complimentary Shuttle Service within 5 Miles of Hotel
- Onsite Laundry and Dry Cleaning Pick Up
- Gift Shop
- Concierge Services and Multilingual Staff
- Pet Friendly

ROOM DETAILS

All rooms feature the following:

- Non- Smoking Guest Rooms
- Kitchenette with Mini Fridge, Microwave and Wet Bar
- Queen Sized Pull Out Sleeper Sofa
- Complimentary Wireless Internet
- Work Desk with Phone and Lamp
- Alarm/Clock Radio, in room Coffee Service, Hair Dryer, Iron & Full Size Ironing Boards
- ADA accessible rooms available
- TV video games, Pay Per View, and On Command movies
- Wireless High Speed Internet Access

MEETING SPACE HIGHLIGHTS

- Over 11,000 Square Feet of Flexible Meeting Space
- Function Space to Accommodate Up to 480 Guests
- All Meeting Space Located on 1st or 2nd Floor
- Complimentary Wireless Internet
- Professional In House Audio Visual Equipment Provider Available
- Customizable Full Service Food and Beverage



ATTRACTIONS

- Galleria Shopping Mall (2.0MI)
- North Park Shopping Mall (4.0 MI)
- University of Texas- Dallas (5.0 MI)
- Richardson Telecom Corridor (5.0MI)
- Southern Methodist University (6.0MI)
- Dallas Museum and Entertainment District (10.0 MI)
- Downtown Dallas (11.0MI)
- JFK, Sixth Floor Museum (11.0MI)
- American Airlines Center (11.0MI)
- Fair Park and Cotton Bowl (11.0MI)
- West End (11.0MI)
- Dallas Convention Center (11.0MI)
- Deep Ellum (12.0MI)

DINING AND ENTERTAINMENT

Your table is waiting at the Café Biarritz, our open-air, European-style bistro and one of the most unique on-site restaurants among hotels in North Dallas. Refuel in the mornings with our extensive and healthy breakfast buffet, available seven days per week. Join us for our à la carte or buffet lunch and enjoy the continental cuisine our Chef prepares for dinner, also available seven days per week.

After a long and productive day, celebrate with a refreshing cocktail and light fare in The Lobby Bar, open seven days per week, or take advantage of in-room dining from 6 a.m. to 10 p.m. if you prefer to enjoy a quiet meal in the privacy of your suite.

GETTING THERE

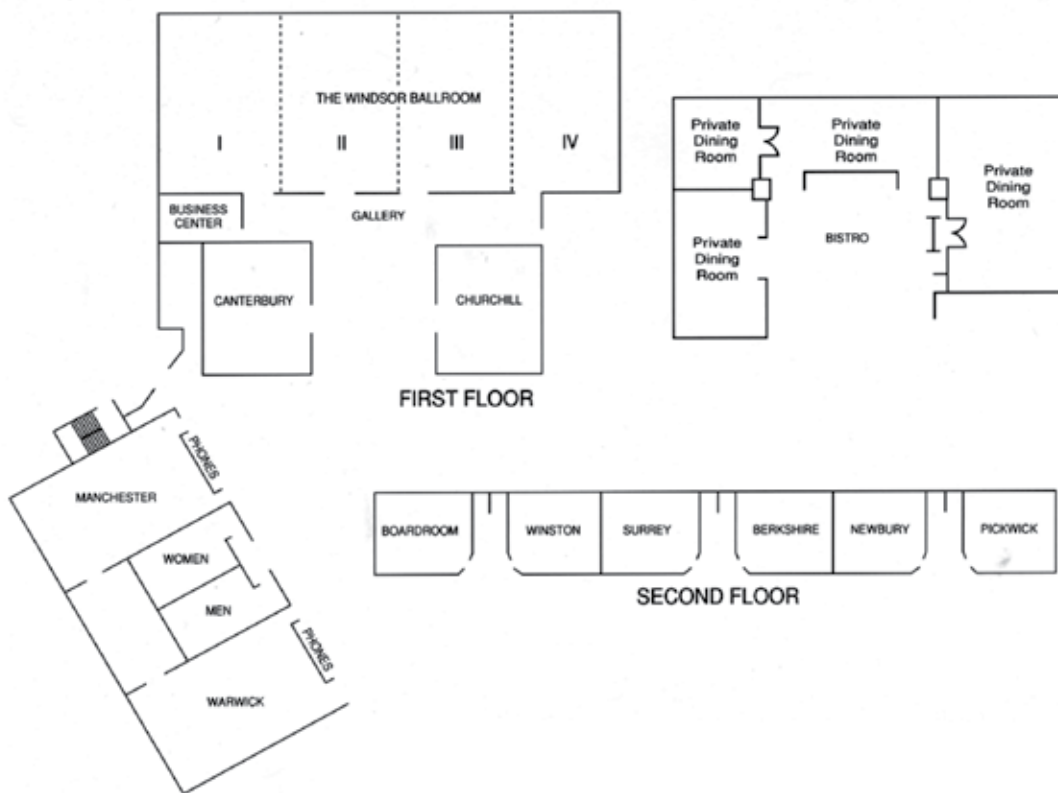
Dallas Love Field (DAL) Distance: 11 Miles. Take Mockingbird east (left) to Dallas Tollway North; Exit I-635 east (LBJ Freeway) and follow to Coit Road Exit. Exit Coit and turn left to 2nd light (Alpha Road) and turn left. Hotel is on left side as you turn.
D/FW International Airport (DFW) Distance: 23 Miles. Take North Airport Exit to I-635 East (LBJ Freeway) Follow for 22 miles and exit Coit Road. Turn left on Coit Road to 2nd light (Alpha Road) and Turn left. Hotel is on the left side as you turn.

MEETING SPACE CAPACITY CHART



ROOM	MAXIMUM CAPACITIES								ROOM DIMENSIONS	SQUARE FOOTAGE	CEILING HEIGHT
	BANQUET	RECEPTION	CLASSROOM	THEATRE	CONFERENCE	U-SHAPE	HOLLOW SQUARE				
WINDSOR BALLROOM	280	400	240	480	—	—	—	—	40' x 102'	4000	14'
I	70	100	60	120	40	30	35	42' x 25'	1000	14'	
II	70	100	60	120	40	30	35	42' x 25'	1000	14'	
III	70	100	60	120	40	30	35	42' x 25'	1000	14'	
IV	70	100	60	120	40	30	35	42' x 25'	1000	14'	
GALLERY										1530	
MANCHESTER	60	70	50	110	30	25	30	42' x 23'	500	12'	
WARWICK	60	70	50	110	30	25	30	42' x 23'	1000	12'	
CANTERBURY	50	60	35	70	20	20	25	29' x 23'	667	12'	
CHURCHILL	50	60	35	70	20	20	25	29' x 23'	667	12'	
WINSTON	30	40	18	40	15	12	15	18' x 21'	378	8'	
SURREY	30	40	18	40	15	12	15	18' x 21'	378	8'	
BERKSHIRE	30	40	18	40	15	12	15	18' x 21'	378	8'	
NEWBURY	30	40	18	40	15	12	15	18' x 21'	378	8'	
PICKWICK	30	40	18	40	15	12	15	18' x 21'	378	8'	
BOARDROOM	8 persons at conference table				8	—	—	12' x 15'	216	8'	
BISTRO	80 with buffet									1500	
PIANO ATRIUM	80 maximum										
UPPER ATRIUM	40 maximum										
LOBBY BAR	40 maximum										
OXFORD SUITES	8 persons										

FLOOR PLAN CHART



WYNDHAM
Dallas Suites - Park Central

7800 Alpha Road, Dallas, Texas 75240
Phone: 972-233-7600 Fax: 972-701-8618

WYNDHAM.COM / 1-800-WYNDHAM
Group Sales: 888-WYNDHAM

All Wyndham® hotels are either franchised by the company or managed by Wyndham Hotel Management, Inc., one of its affiliates or through a joint-venture partner. ©2012 Wyndham Hotels and Resorts, LLC. All rights reserved.