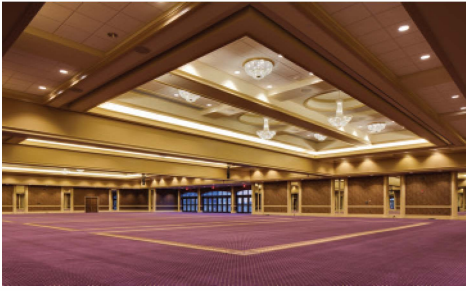


Galt House® Hotel Floor Plans



GALT HOUSE HOTEL



HOTEL FACT SHEET

Galt House Hotel, Louisville's Waterfront Hotel®, is located on the waterfront in the center of the business & entertainment district, only 12 minutes from Louisville International Airport. The largest hotel in Kentucky boasts 1,310 guest rooms, including 660 Executive Suites and 650 Deluxe Rooms. With 130,000 square feet of meeting space, the Galt House Hotel has comprehensive meeting and convention services for up to 4,000 attendees.

Convention, Meeting & Exhibit Space

- 130,000 sq. ft. of meeting space
- Grand Ballroom with 23,330 sq. ft. of divisible space and an expansive Grand Foyer
- 16,000 sq. ft. Exhibit Hall
- Archibald Cochran Ballroom featuring 15,412 sq. ft. and an outdoor balcony overlooking the Belvedere
- 53 meeting rooms ranging from 500-10,000 sq. ft.
- State-of-the-art audio/visual technology with Wi-Fi available in all meeting rooms
- Rooftop Garden and Terrace Room

SUITE Tower Executive Suites

660 beautifully appointed, one-bedroom Executive Suites feature:

- 720 sq. ft. of spacious accommodations
- Large living room with sofa sleeper
- Wet bar, refrigerator, coffee maker, desk, hairdryer, iron/ironing board
- Two flat screen TVs
- In-room safe
- Great waterfront and city views available

RIVUE Tower Deluxe Rooms

650 Deluxe Rooms feature:

- 420 sq. ft. of spacious accommodations
- Coffee maker, hairdryer, iron/ironing board
- Flat-screen TV
- Separate sink area
- Great waterfront and city views available

Waterfront Balcony Suites

50 Balcony Suites with spectacular views overlooking Louisville's award-winning waterfront. One and two bedroom suites available.

Amenities & Services

- Club 360° Fitness Center, located atop the SUITE Tower features panoramic views, low-impact aerobic equipment with individual TVs, state-of-the-art fitness machines, and free weights
- Waterfront outdoor pool (open seasonally)
- Business Center is open 24/7 with room key access where computer and printer are available
- Waterfront Park (walking and running trails) and Big Four Pedestrian and Bicycle Bridge
- On-site transportation company with daily transportation to/from the airport

Salon & Spa Services

- Xhale Spa and Salon
- The Hair-Cutters Barbershop

Retail Row & Shopping

- On-site retail shopping that is distinctively Louisville featuring Dolfinger's, KOI Gallery, 3rd Floor Spirits & More, Mint Julep Tours, Talbott Fashions, and Hey Lady!
- Complimentary shuttle to the The Outlet Shoppes of the Bluegrass

Bourbon Country

- Visit Bourbon Country with a guided tour by Mint Julep Tours and Retail Shop
- Celebrate Louisville's spirited heritage at some of the world's best bourbon bars on the Urban Bourbon Trail.
- Galt House Hotel is just a shot away from historic Whiskey Row. Since 1780, it was home to as many as 50 distilleries until the 1920's. Distilleries are making their way back to Whiskey Row.

On-Site UPS Store

Located in the SUITE Tower on the 2nd floor. Document services, parcel receiving, full service packaging, computer access and sending services. Open daily.

Going Green

Galt House Hotel is doing its part to help protect the environment by participating in a program designed to save valuable resources, such as energy & water, and to eliminate the unnecessary use of detergent.

Parking

3,200 covered parking spaces available on site. Current charges of \$20 per day for in/out privileges and \$28 per day for valet services. (Rates are subject to change without notice.) Parking charges apply for self-parking and valet. Coach parking is available for \$55.

Restaurants & Lounges

- **Room Service** offers private dining at its best!
- **RIVUE Restaurant & Lounge®** has a view to "dine for." Featuring breathtaking views of the city and the waterfront. Open for Dinner, Monday-Saturday, and Sunday Brunch.
- **Café Magnolia** offers casual dining for breakfast, lunch and dinner daily.
- **Jockey Silks Bourbon Bar** features more than 100 bourbons and a tasty pub menu.
- **Al J's at the Conservatory** is the best place to "sip a drink" at the aquarium bar.
- **Thelma's Deli** is open 24/7 serving a deli-style menu.
- **Jeff Ruby's Steakhouse** features USDA Prime steaks and seafood, Monday-Saturday.
- **Down One Bourbon Bar & Restaurant** offers more than 150 bourbons and whiskey, plus tasty entrees.

Local Attractions

- Actors Theatre of Louisville
- Belle of Louisville and the Mary M. Miller
- Churchill Downs & Kentucky Derby Museum
- Derby Dinner Playhouse
- Evan Williams Bourbon Experience
- Falls of the Ohio State Park
- Fourth Street Live! Entertainment District (Connected by Skywalk)
- Frazier History Museum
- Kentucky Center for the Arts
- Kentucky Science Center and IMAX, Kentucky Show!
- KFC Yum! Center (Connected by Skywalk)
- KMAC Museum
- Louisville Glassworks
- Louisville MEGA Cavern
- Louisville Palace
- Louisville Slugger Field (Home of Louisville Bats Baseball)
- Louisville Slugger Museum & Factory
- Louisville Stoneware & Company
- Louisville Zoo
- Muhammad Ali Center (Connected by Skywalk)
- NuLu Shopping District
- Speed Art Museum
- Urban Bourbon Trail
- Waterfront Park
- Whiskey Row

Contact Information

140 N. Fourth Street
Louisville, KY 40202
(502) 589-5200
Group Sales: (502) 568-4290
Visit us at: GaltHouse.com



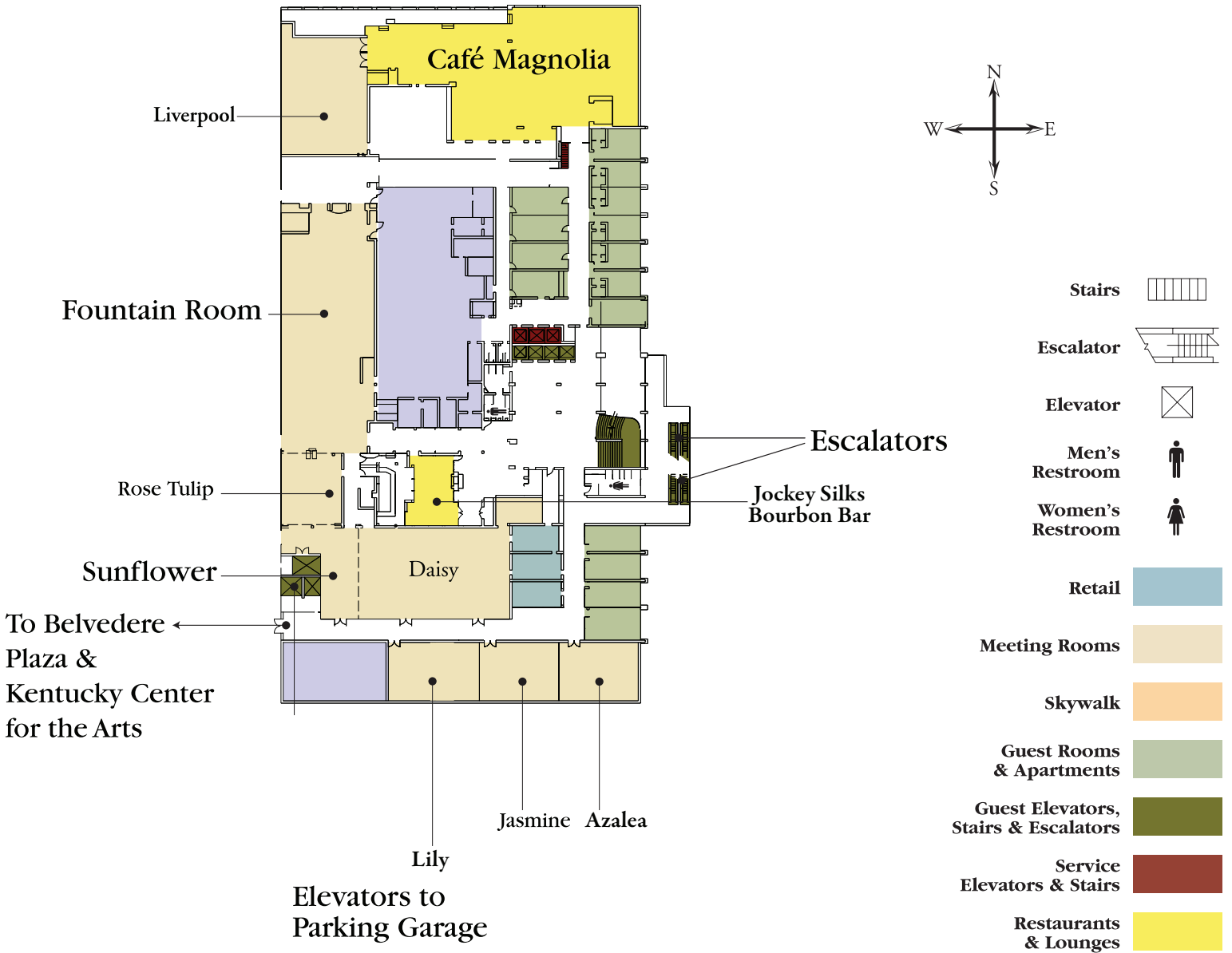
GALT HOUSE HOTEL

Capacity Chart

	ROOM DIMENSIONS L x W	SQUARE FOOTAGE	CEILING HEIGHT	BANQUET CAPACITY	CLASSROOM CAPACITY	THEATRE CAPACITY	CONFERENCE CAPACITY	U-SHAPE CAPACITY	HOLLOW SQUARE CAPACITY
Rose Tulip*	29' x 33'	980	9'11"	72	48	82	28	34	44
Daisy*	74' x 44'	3,256	9'11"	248	180	388	60	70	84
Sunflower*	23' x 44'	1,012	9'11"	64	54	121	36	34	44
Daisy Sunflower	97' x 44'	4,268	9'11"	328	261	527	84	96	108
Lily	47' x 32'	1,435	10'10.5"	129	44	160	40	40	40
Jasmine	27' x 32'	780	10'11"	65	32	87	19	24	20
Fountain Room	118' x 45'	4,975	8'9"	300	207	552	119	142	119
Azalea	40' x 32'	1,228	10'11"	80	50	100	35	35	45
Liverpool	42' x 42'	1,675	8'2"	150	100	200	50	50	60

* Denotes connecting room via air wall

Floor Plan



Capacity Chart / Third Floor

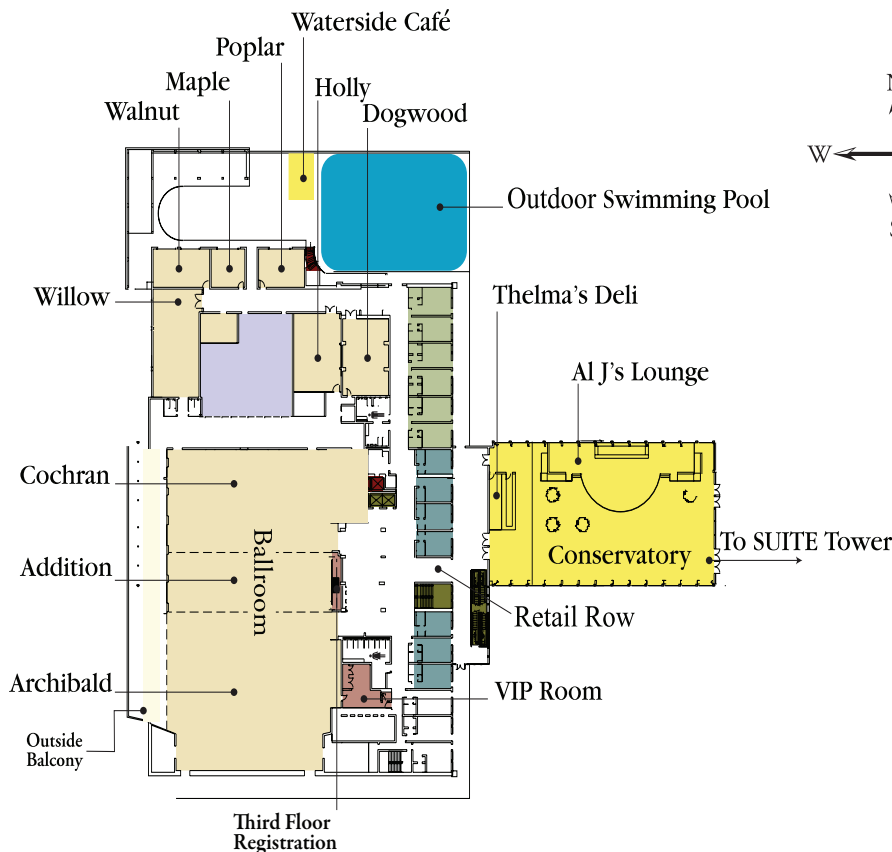
ROOM	DIMENSIONS L x W	SQUARE FOOTAGE	CEILING HEIGHT	BANQUET CAPACITY	CLASSROOM CAPACITY	THEATRE CAPACITY	CONFERENCE CAPACITY	U-SHAPE CAPACITY	HOLLOW SQUARE CAPACITY	EXHIBITS	
										CAPACITY	CAPACITY
Archibald Cochran Ballroom	192' x 74' 1"	15,412	11'6"-20'10"	1,282	642	1,711	370	441	370	96	77
Archibald*	110'7" x 74'1"	8,184	11'6"-20'10"	681	341	908	196	234	196	51	41
Archibald with Addition*	147' x 74' 1"	10,912	11'6"-20'10"	908	454	1,211	262	312	262	68	55
Cochran*	45' x 100'1"	4,500	11'6"-20'10"	374	187	500	108	129	108	28	23
Cochran with Addition*	82' x 100' 1"	7,228	11'6"-20'10"	601	301	802	173	207	173	45	36
Third Floor Registration	26'2" x 8'9"	324	8'								
Dogwood	39' x 27'	1,026	9'	80	45	98	34	34	44		
Holly	40' x 27'	1,092	9'	80	45	109	36	34	44		
Poplar	19' x 26'	520	8'	32	18	44	20	22	28		
Maple	19' x 19'	386	8'	24	12	30	19	14	20		
Walnut	19' x 33'	654	8'	48	24	60	28	30	28		
Willow	28' x 55'	1,512	13'	112	90	180	52	50	60		

* Denotes connecting room via air wall -Beam to Peak

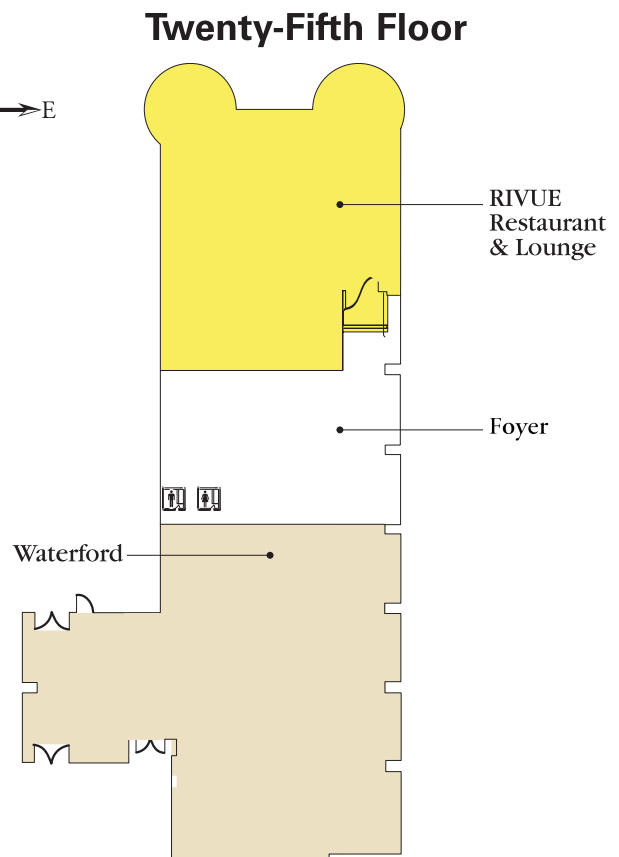
Capacity Chart / Twenty-Fifth Floor

ROOM	DIMENSIONS L x W	SQUARE FOOTAGE	CEILING HEIGHT	BANQUET CAPACITY	CLASSROOM CAPACITY	THEATRE CAPACITY	CONFERENCE CAPACITY	U-SHAPE CAPACITY	HOLLOW SQUARE CAPACITY
Waterford Room	97' x 65'	4,126	9'	230	183	400	76	82	92
Rivue	74' x 160'	5,266	8'5"	230					

Floor Plans



Third Floor (Conservatory/Skywalk Level)

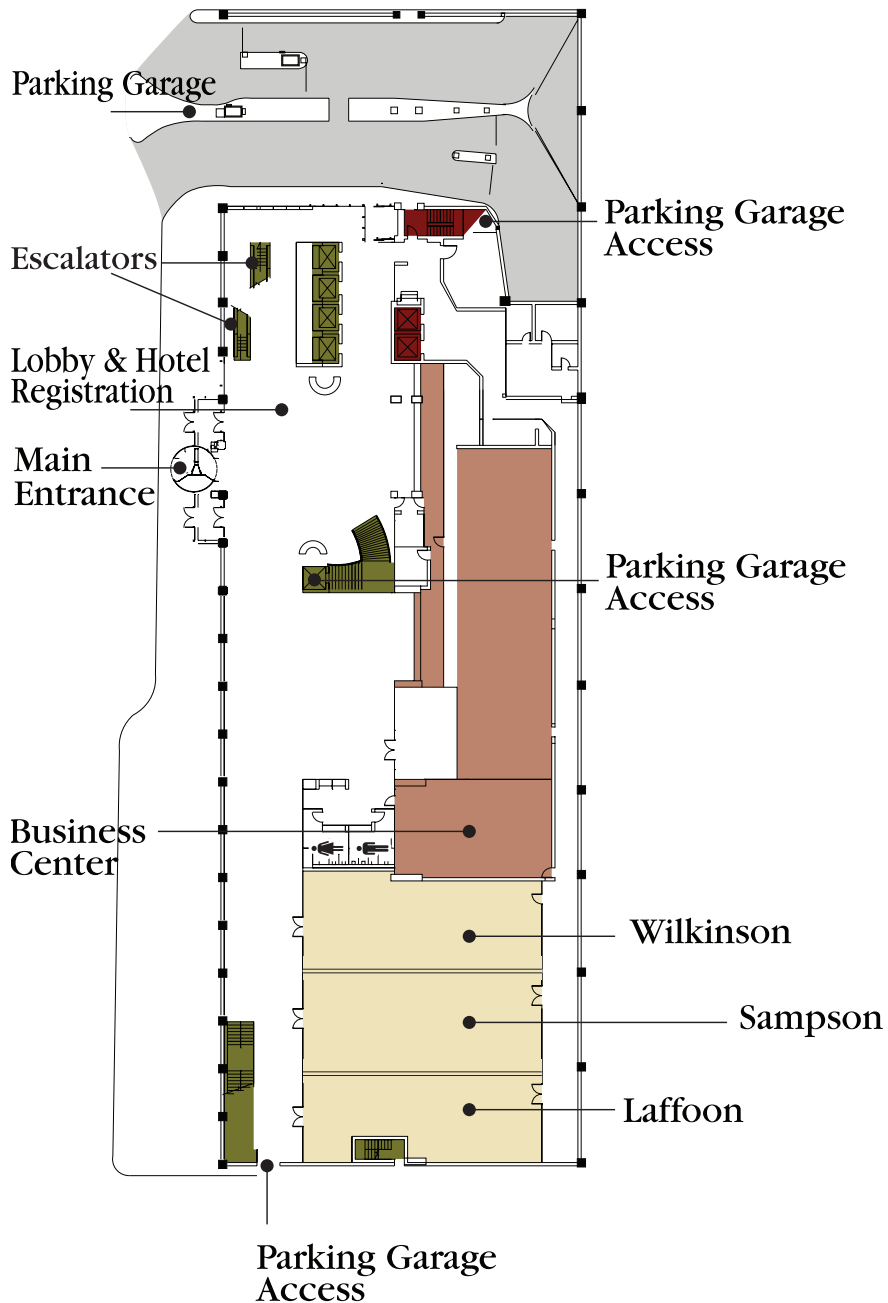


Capacity Chart / First Floor (Lobby Level)

	ROOM DIMENSIONS L x W	SQUARE FOOTAGE	CEILING HEIGHT	BANQUET CAPACITY	CLASSROOM CAPACITY	THEATRE CAPACITY	CONFERENCE CAPACITY	U-SHAPE CAPACITY	HOLLOW SQUARE CAPACITY
Wilkinson	71' x 30'	2,130	9'	150	100	225	40	45	60
Sampson	71' x 30'	2,130	9'	150	100	225	40	45	60
Laffoon	71' x 26'	1,846	9'	120	65	150	30	30	30

Floor Plan

First Floor (Lobby Level)

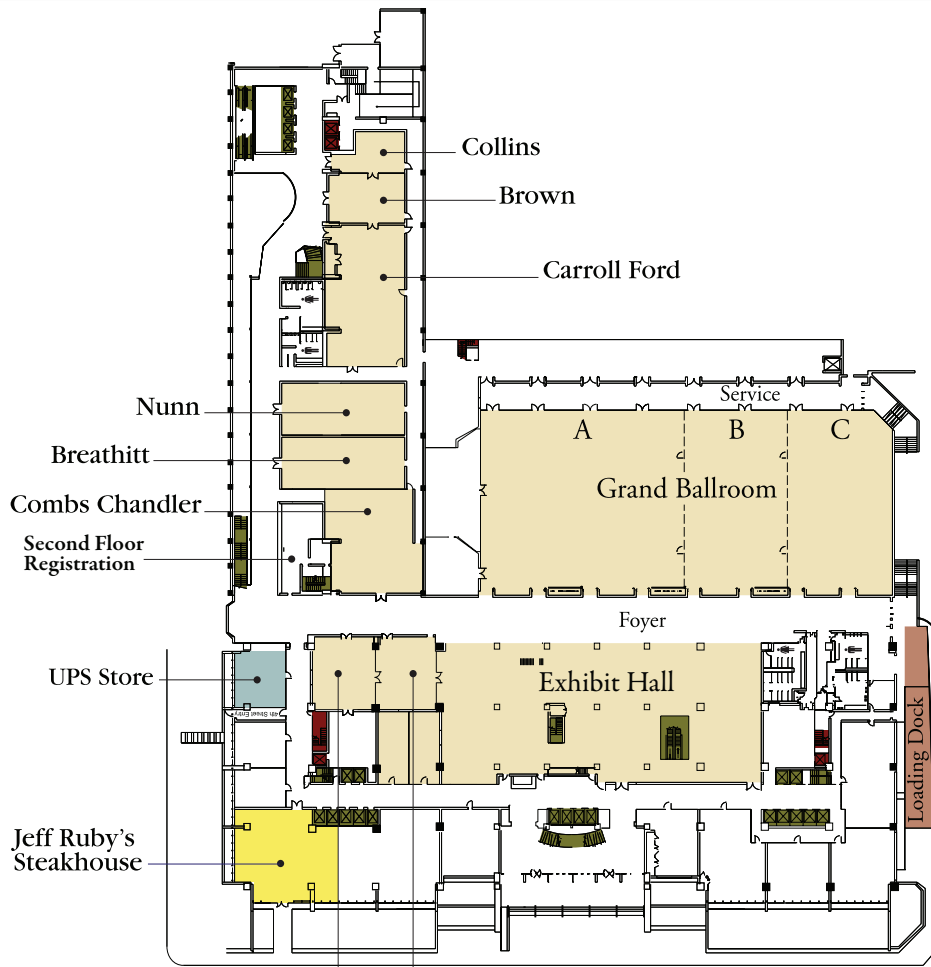


Capacity Chart / Second Floor (Ballroom Level)

	ROOM DIMENSIONS L x W	SQUARE FOOTAGE	CEILING HEIGHT	BANQUET CAPACITY	CLASSROOM CAPACITY	THEATRE CAPACITY	CONFERENCE CAPACITY	U-SHAPE CAPACITY	HOLLOW SQUARE CAPACITY	EXHIBITS	
										CAPACITY	CAPACITY
Grand Ballroom	101' x 231'	23,331	22'	1,640	1,188	2,188				8x10	10x10
Grand Ballroom (A/B)	101' x 172'	17,372	22'	1,160	936	1,840				88	76
Grand Ballroom (B/C)	101' x 118'	11,918	22'	760	624	1,240				39	57
Ballroom A*	101' x 113'	11,413	22'	648	504	1,220				54	48
Ballroom B*	101' x 59'	5,959	22'	360	336	630				29	29
Ballroom C*	101' x 59'	5,959	22'	320	336	630				29	29
Ballroom Foyer	251' x 28'	6,030	11'5"							23	
Exhibit Hall +	176' x 77'	13,133	11'2"	792						64	52
Second Floor Registration	48' x 11'3"	6,030	9'4"								
Collins +	28' x 22'	616	9'8"	40	30	60	20	20	25		
Brown +	42' x 26'	1,092	9'8"	70	45	100	30	30	30		
Carroll Ford +	45' x 77'	3,297	10'	200	150	300	68	70	80		
Nunn	69' x 29'	2,001	10'	120	100	200	50	60	40		
Breathitt	69' x 28'	1,932	10'	120	100	200	50	60	40		
Combs Chandler	57' x 50'	2,850	10'	208	162	311	52	62	76		
Willis +	32' x 40'	1,248	10'	88	60	151	28	34	44	6	
Clements +	38' x 40'	1,482	10'	112	72	140	36	42	40	7	

+ Denotes connecting rooms via door * Denotes connecting room via air wall

Floor Plan



Willis Clements **Second Floor (Ballroom Level)**

Capacity Chart / Third Floor

	ROOM DIMENSIONS L x W	SQUARE FOOTAGE	CEILING HEIGHT	BANQUET CAPACITY	CLASSROOM CAPACITY	THEATRE CAPACITY	CONFERENCE CAPACITY	U-SHAPE CAPACITY	HOLLOW SQUARE CAPACITY
Bradley +	17' x 19'	323	9'		18	40	8	22	20
Fields +	19' x 30'	570	9'	32	18	40	20	22	20
Morrow +	19' x 51'	969	10'	64	42	75	36	35	40
Stanley	35' x 26'	1,015	10'	72	48	90	28	34	40
Wilson	25' x 29'	738	10'	48	27	60	20	26	36
Taylor	25' x 50'	1,250	10'	75	51	100	28	38	44
McCreary	44' x 40'	1,845	10'	136	78	183	44	42	52
Beckham	44' x 33'	1,478	10'	90	60	151	35	38	44
Jones	39' x 80'	2,909	10'	224	129	286	68	66	76
French	41' x 80'	2,835	10'	170	138	300	68	74	84
Segell +	46' x 72'	2,968	10'	195	141	285	68	74	84
Stopher +	39' x 69'	2,420	10'	160	117	200	60	58	68
Coe	39' x 66'	2,183	10'	140	70	200	50	50	50

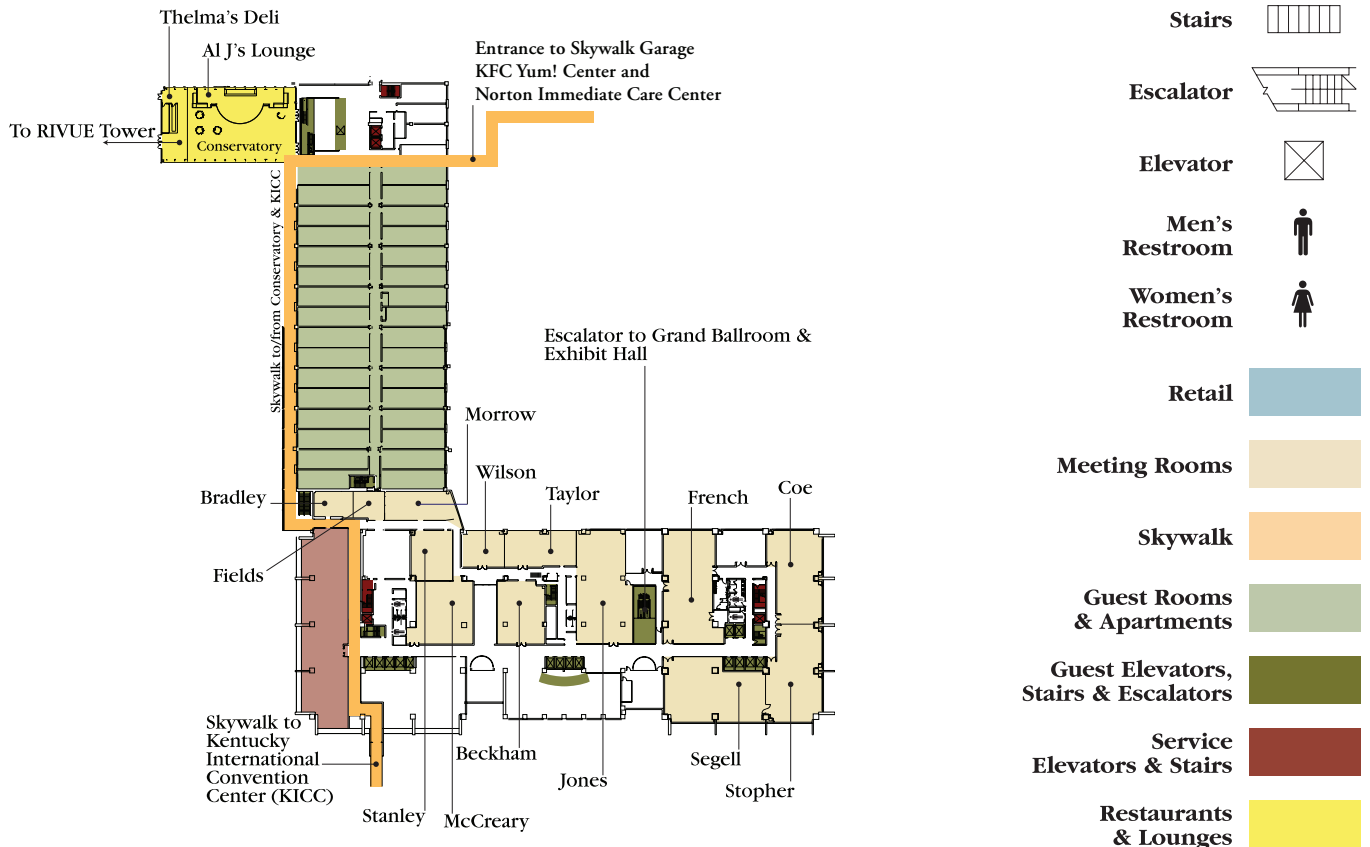
+ Denotes connecting rooms via door

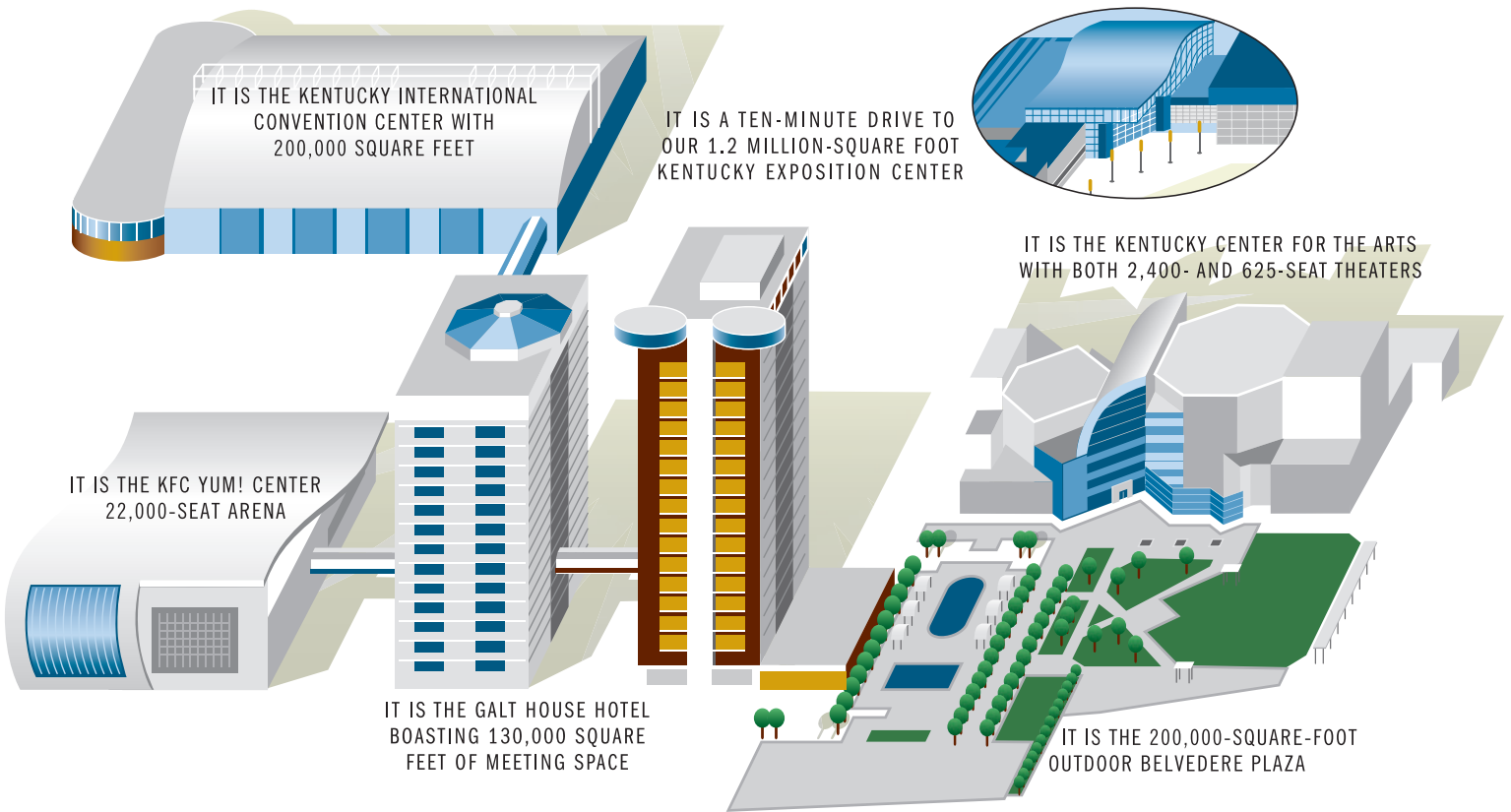
Capacity Chart / Sixteenth Floor

	ROOM DIMENSIONS L x W	SQUARE FOOTAGE	CEILING HEIGHT	BANQUET CAPACITY	CLASSROOM CAPACITY	THEATRE CAPACITY	CONFERENCE CAPACITY	U-SHAPE CAPACITY	HOLLOW SQUARE CAPACITY
Terrace Room	40' x 26'	1,040	7'7"	70	30	125	24	30	36

Floor Plans

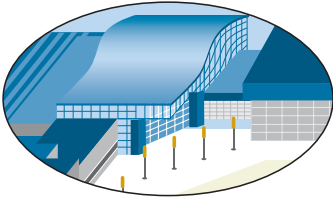
Third Floor (Conservatory/Skywalk Level)





IT IS THE KENTUCKY INTERNATIONAL
CONVENTION CENTER WITH
200,000 SQUARE FEET

IT IS A TEN-MINUTE DRIVE TO
OUR 1.2 MILLION-SQUARE FOOT
KENTUCKY EXPOSITION CENTER



IT IS THE KENTUCKY CENTER FOR THE ARTS
WITH BOTH 2,400- AND 625-SEAT THEATERS

IT IS THE KFC YUM! CENTER
22,000-SEAT ARENA

IT IS THE GALT HOUSE HOTEL
BOASTING 130,000 SQUARE
FEET OF MEETING SPACE

IT IS THE 200,000-SQUARE-FOOT
OUTDOOR BELVEDERE PLAZA



GALT HOUSE HOTEL

140 N. Fourth Street
Louisville, Kentucky 40202
Phone (502) 589-5200
1-800-The-Galt
GaltHouse.com